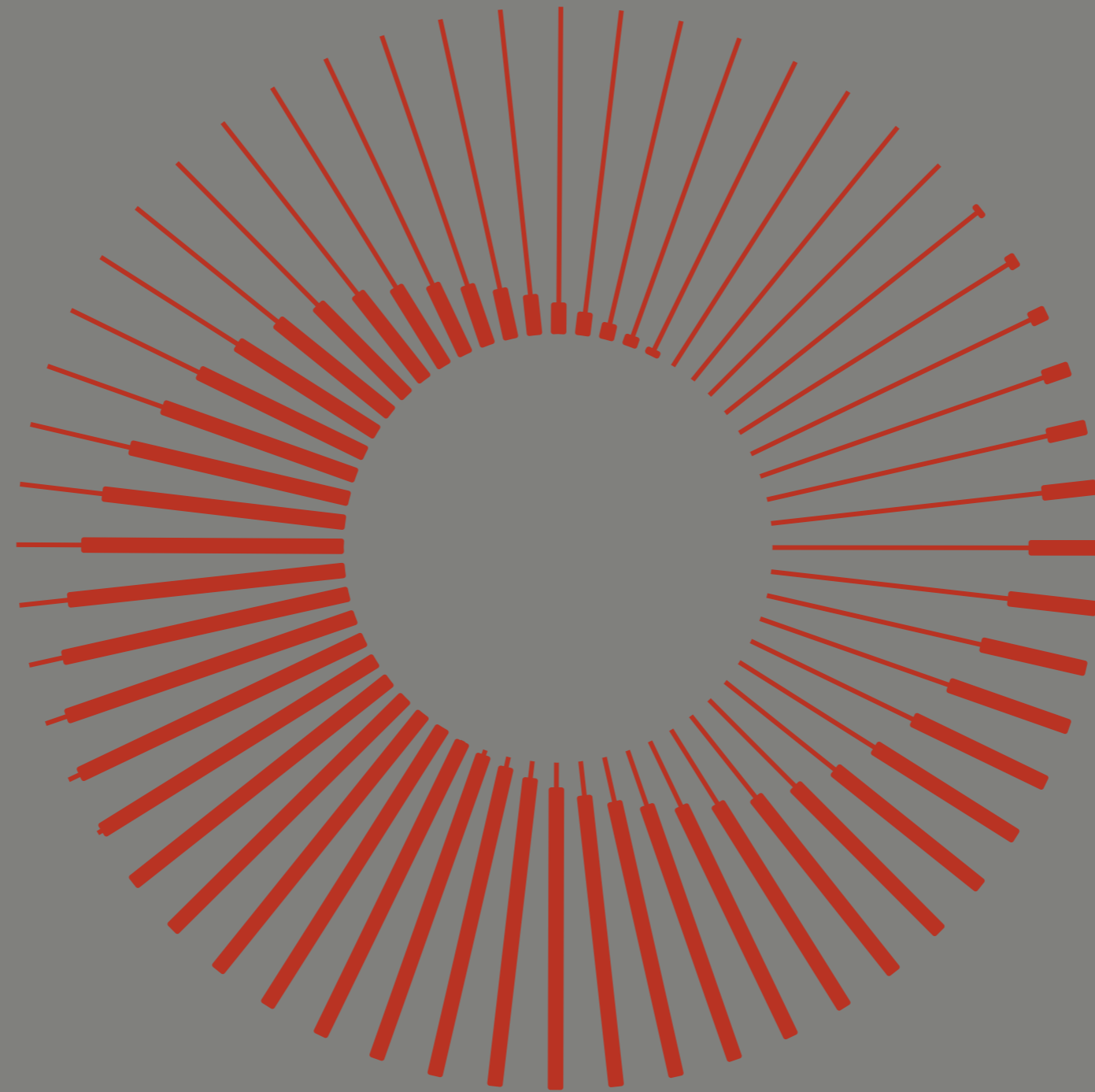


MESTIERI

###



Sculptural Staircases

Every great architectural project
begins with a vision.



Transforming it into reality requires
ancient *craft* methods integrated
with new competencies, advanced
engineering, structured project
management and ongoing dialogue
with architects and designers.
It demands a deep understanding
of materials and a mastery
of fabrication processes.

Italian manufacturing has been built
by generations of learning, skill,
and the ability to address technical
complexities to achieve coordination
across different specializations.



Mestieri is a group of specialized Italian companies dedicated to the bespoke creation of high-end interiors and architectural elements

We craft timeless creations

(BUDRI® +  + lamparredo + SKILLMAX + ) MESTIERI



Combing *engineering*
and *project management*
with an integrated supply
chain of *artisan specializations*
to support professionals
in complex projects
on land and sea



Services

 **MESTIERI**

Engineering
e Project Management
in ambito civile

 **SOMEC
TSI**

Engineering
e Project Management
in ambito navale

Manufacturing

 **BUDRI®**

Decorative Marble

 | **lamparredo**

Ornamental Metal

 **SKILLMAX**

Interior Millwork

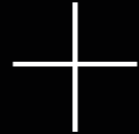
Value chain

Architects
Interior Designers
Luxury Brands
General Contractors
Public Institutions
Private Clients
Shipbuilders
Shipowners



Engineering and Project Management

MESTIERI | **M** SOMEC TSI



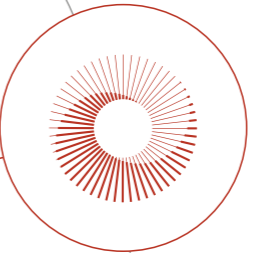
Decorative Marble
BUDRI

Ornamental Metal
CEO LIN | lamparredo

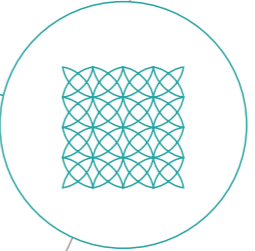
Interior Millwork
SKILLMAX



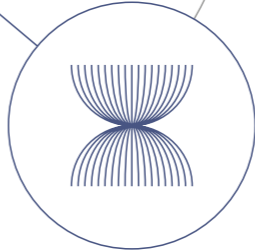
Exclusive Windows and Iconic Façades



Sculptural Staircases



Luxury Surfaces



Tailored Interiors

Boutique & Retail

Hospitality & Public Spaces

Residential

Workspaces

Museums & Cultural Spaces

Yachts & Cruise Ships

Sculptural Staircases: driver companies

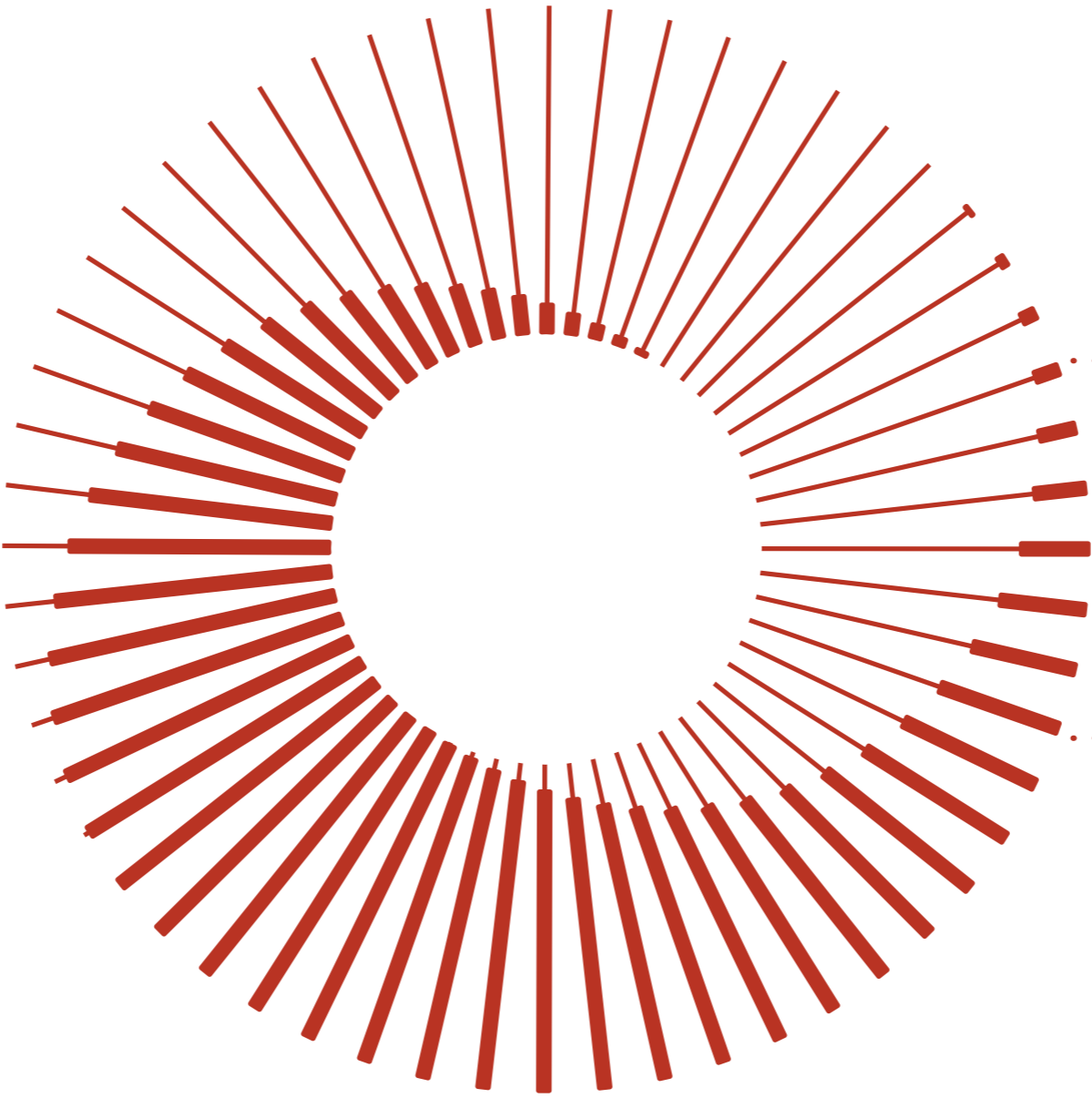
MESTIERI

Technical Management

- Consulting
- Design Assist
- Value Engineering
- Prototyping

Operations Management

- Project Management
- Financial Management
- Procurement
- Construction Supervision
- Site Management
- Delivery and Testing



Structures

Ceolin crafts bespoke metal structures and ornamental wrought-iron elements



Cladding

Budri and Skillmax clad staircases in marble, wood, and other high-end materials

lamparredo

Components

Lamparredo crafts handrails, balustrades, and other signature metal elements



MESTIERI

—
Technical and operations management specialists



**CEOLIN
LAMPARREDO
BUDRI
SKILLMAX**

—
Metal, marble and wood work specialists

Thinking/ Making

Every staircase is a statement,
poised between vertical
momentum and sculpted form.
From this concept,
we shape movement
and *elevate it* into
pure spatial expression.

Step by step,
our *creative problem-solving*
brings the impossible
within reach of reality

Design Assist

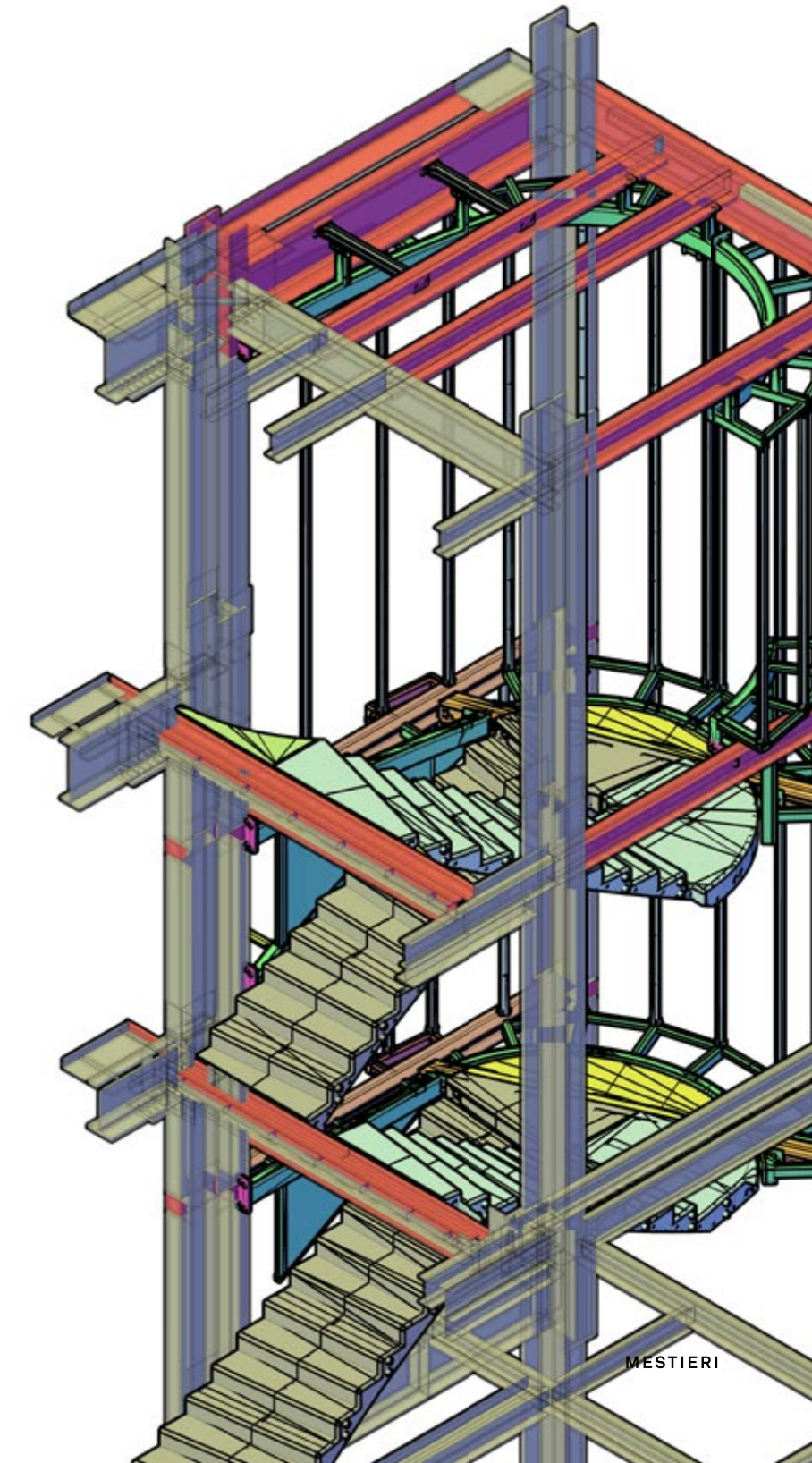
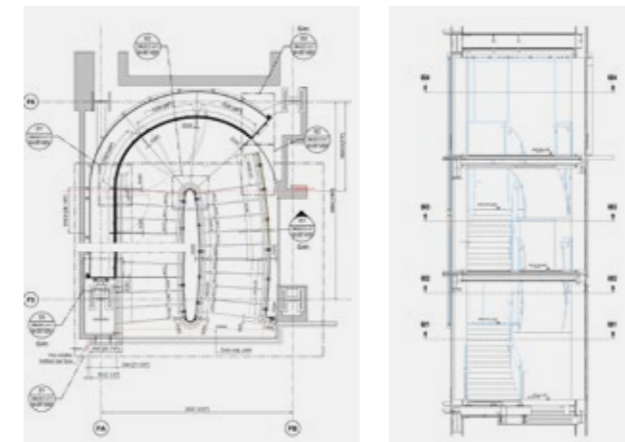
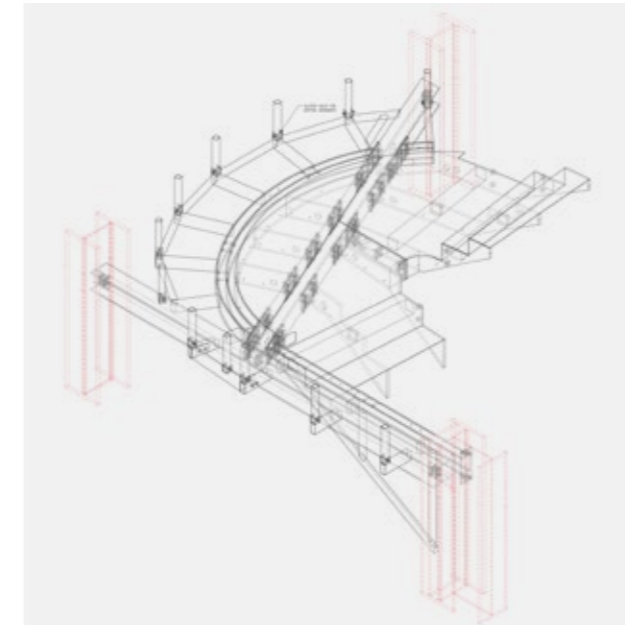
In the early stages of design, Mestieri steps in as a technical partner, working alongside architects and clients. What begins as an idea is gradually shaped into a buildable vision, informed by structural realities, regulatory boundaries, and the inherent characteristic of each material.

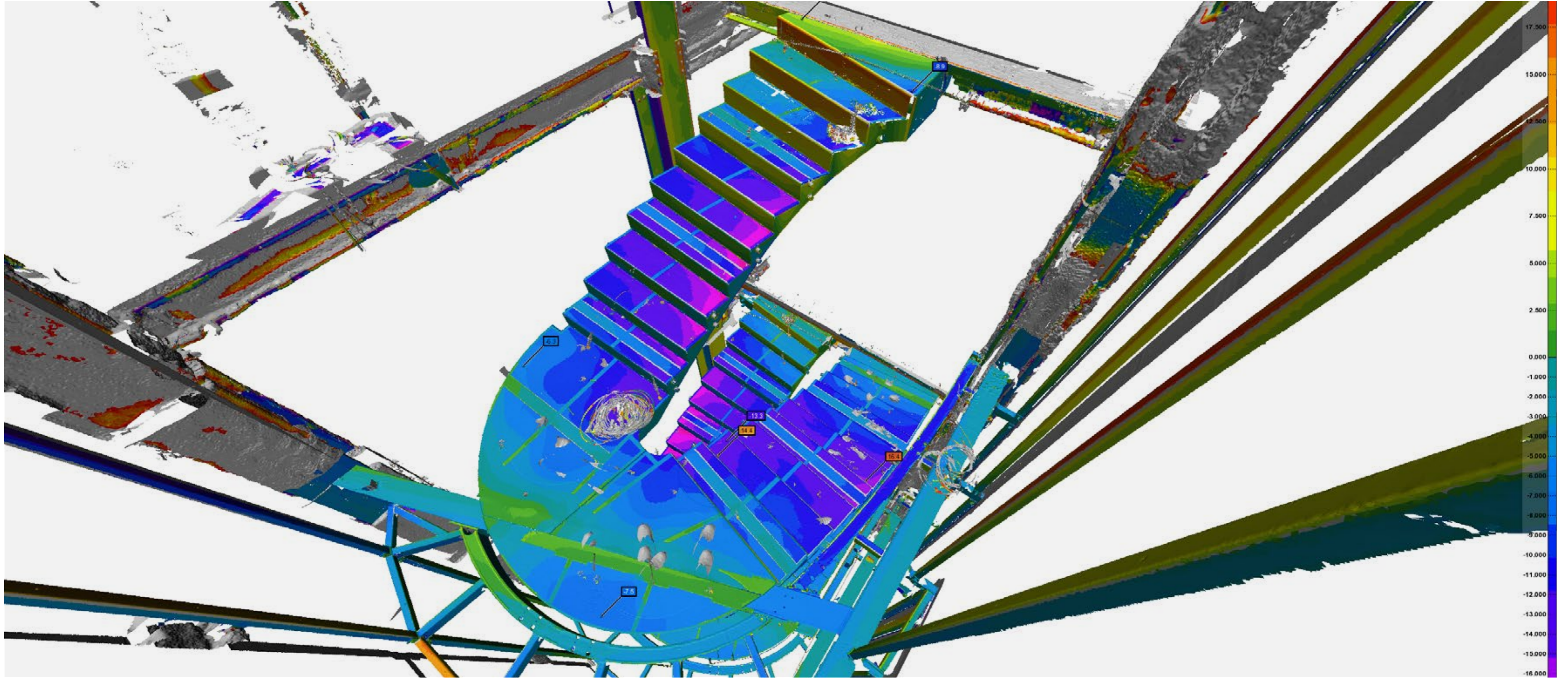
Here, creative intent and technical mastery work in tandem, guiding every engineered choice. Through focused proposals on dimensions, fixings, technical variations, and finishes, the design framework gains clarity and depth, opening the way to richer, more personal customization.



Design Engineering

The approved concept evolves into a complete and actionable project. Technical drawings, 3D scans, and structural analysis give precise shape to every element and detail, from geometries and connections to anchoring points and installation procedures. The three-dimensional digital model becomes a true coordination tool, enabling integrated control over components to significantly reduce the margin of error. Through engineering, the design vision comes into full coherence of what can be technically realized.

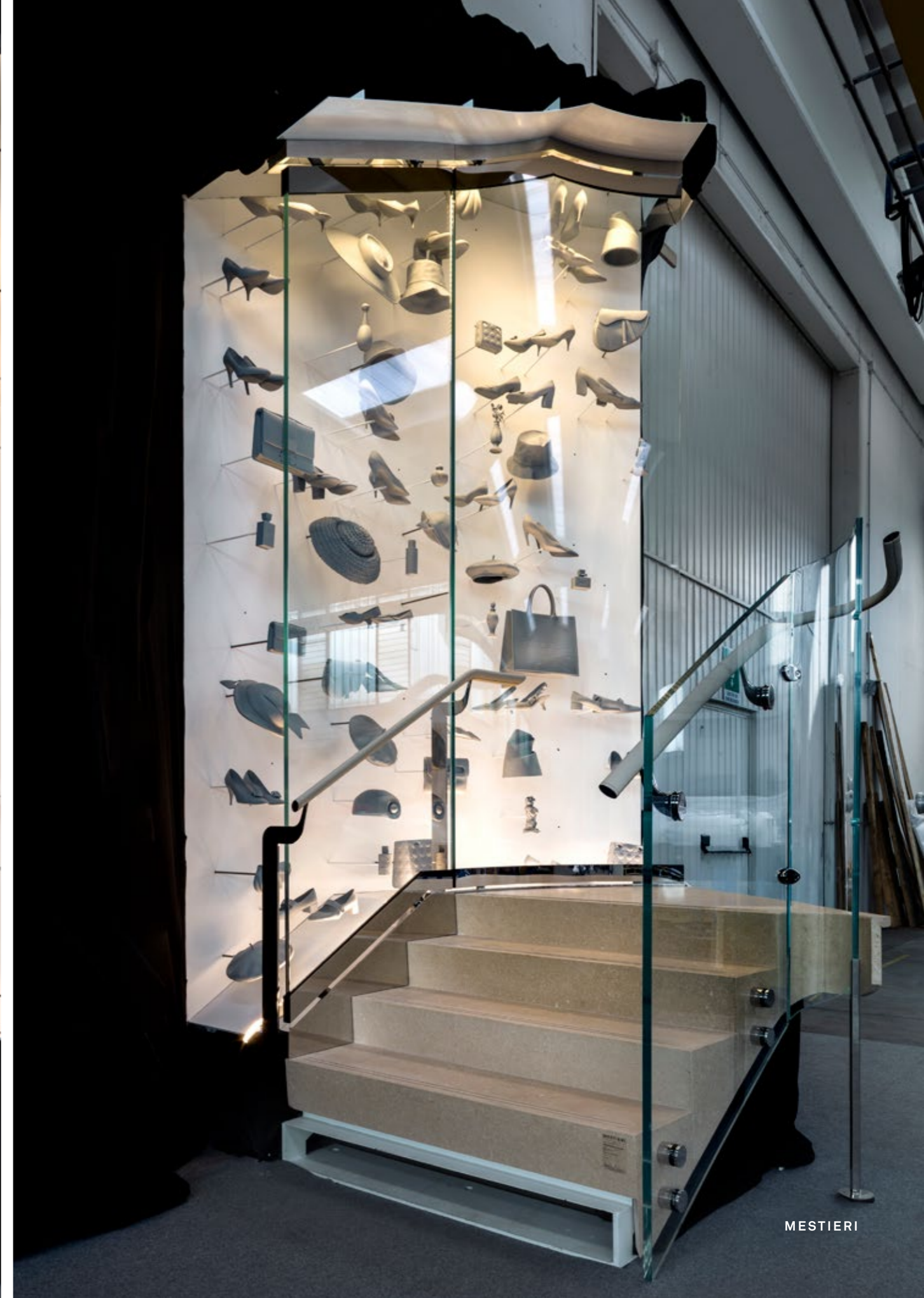
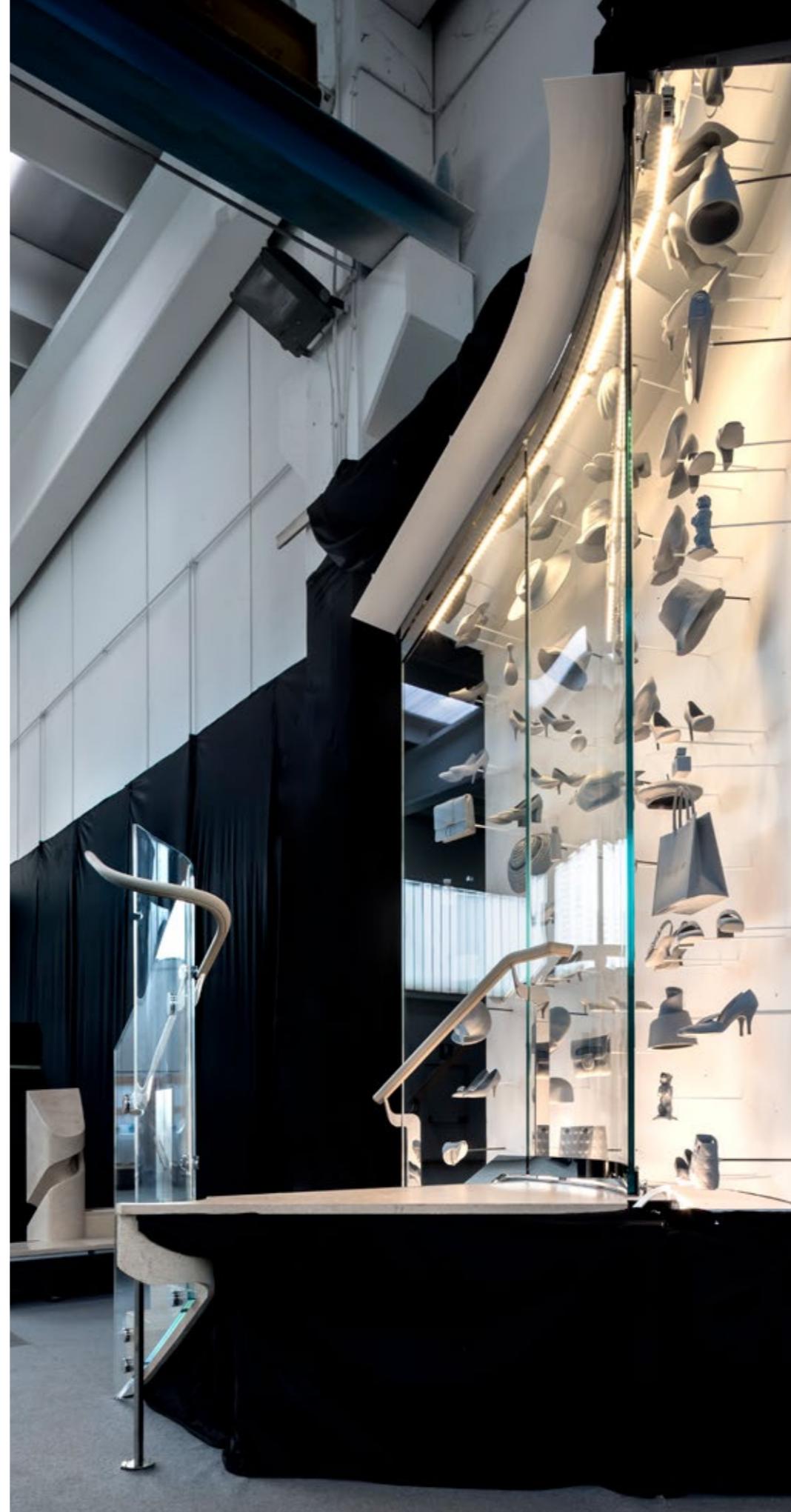




Mockup

Through the creation of precision-built prototypes, the technical solutions developed in the design phase are tested in their real-world applicability, giving clients a tangible sense of the work long before production begins.

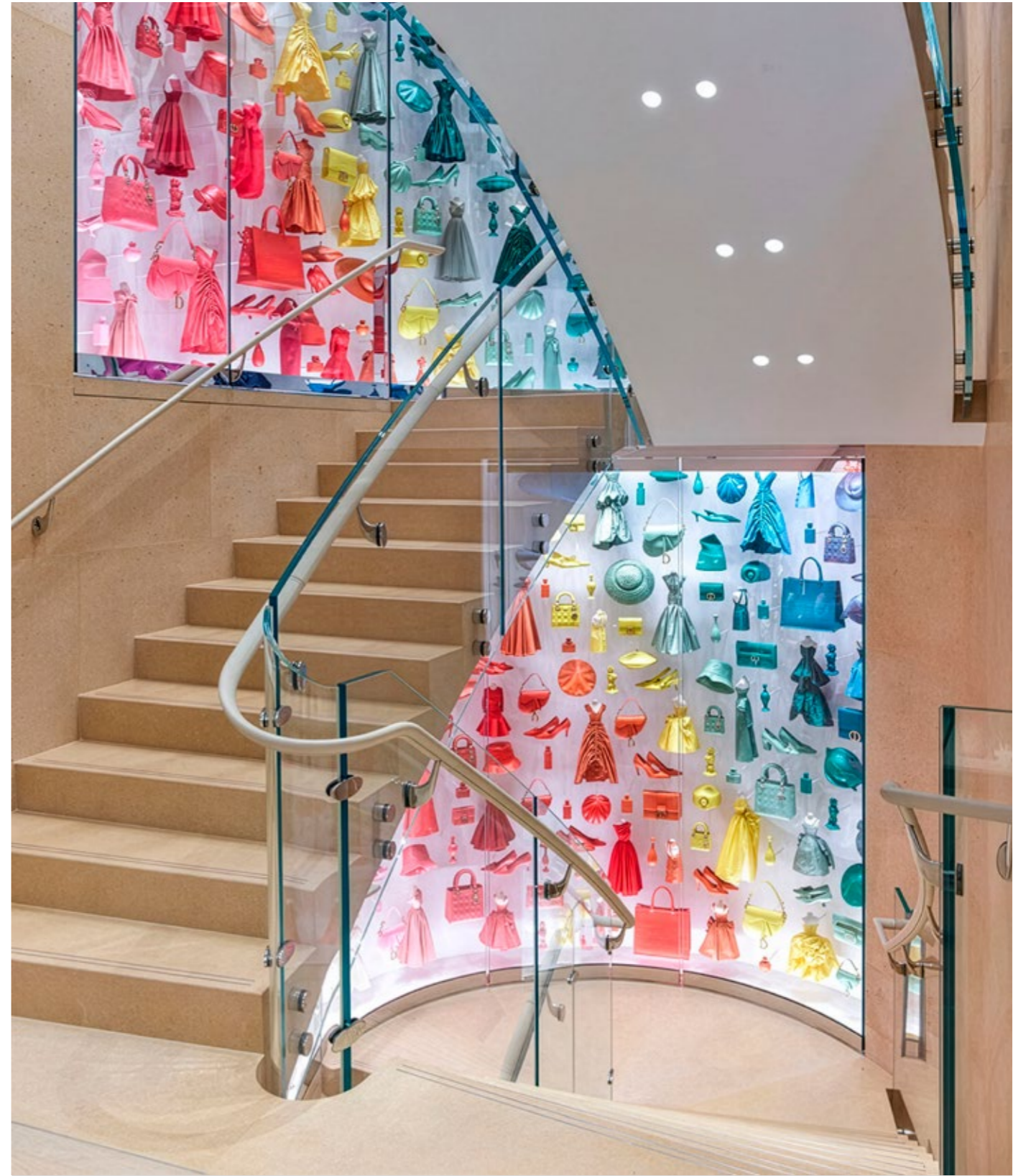
The project acquires a new layer of refinement as construction quality is verified, finishes are confirmed, and design choices are validated. As the work moves from the virtual to the physical, potential issues surface early and can be addressed with targeted adjustments, minimizing the risk of unexpected issues during execution.





From architectural concept to structural design: the staircase connects the different levels of a flagship store for an international brand. Its variable-curvature elliptical geometry generates a continuous, dynamic flow as it rises through three-levels of the space.

Defining the elegant composition, glass balustrades, and elliptical leather-finished handrails are surrounded by a nearly twenty-foot-high curved-glass showcase with concealed opening mechanisms.





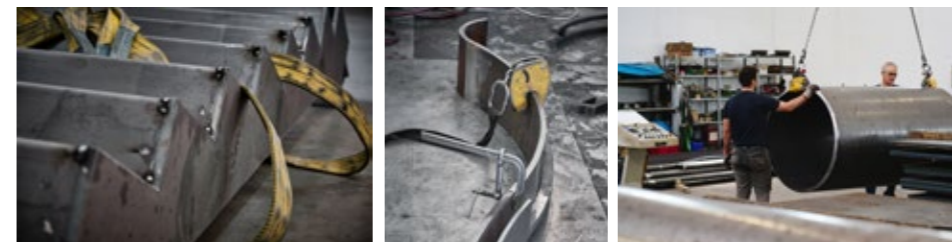
DESIGN + PRODUCTION + INSTALLATION + CERTIFICATION

Crafted beauty: An uncompromisingly tailored approach that unites artisanal mastery with cutting- edge technology

Craftsmanship and cutting-edge technological capabilities

It is this synergy that distinguishes every creation: elements endowed with a soul defined not only by their materials, but by the mastery and technology of those who shape them.

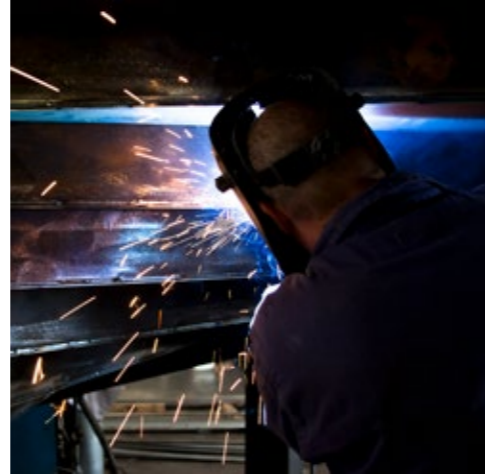
As standards grow increasingly demanding, the goal is to rise above expectations, elevating every architectural element beyond pure function and making it part of the prestige experience.



Structure production and assembly

Components are shaped using advanced technologies and numerically controlled machines, delivering precision and consistency. Human touch completes each process with a level of care that carries through every detail.

In the shop, each structure is fully pre-assembled, complete with all components and finishes, to ensure that as few variables as possible remain once on site. A thorough final quality review confirms compliance with the required standards before shipment, a crucial step for projects installed internationally and overseas.

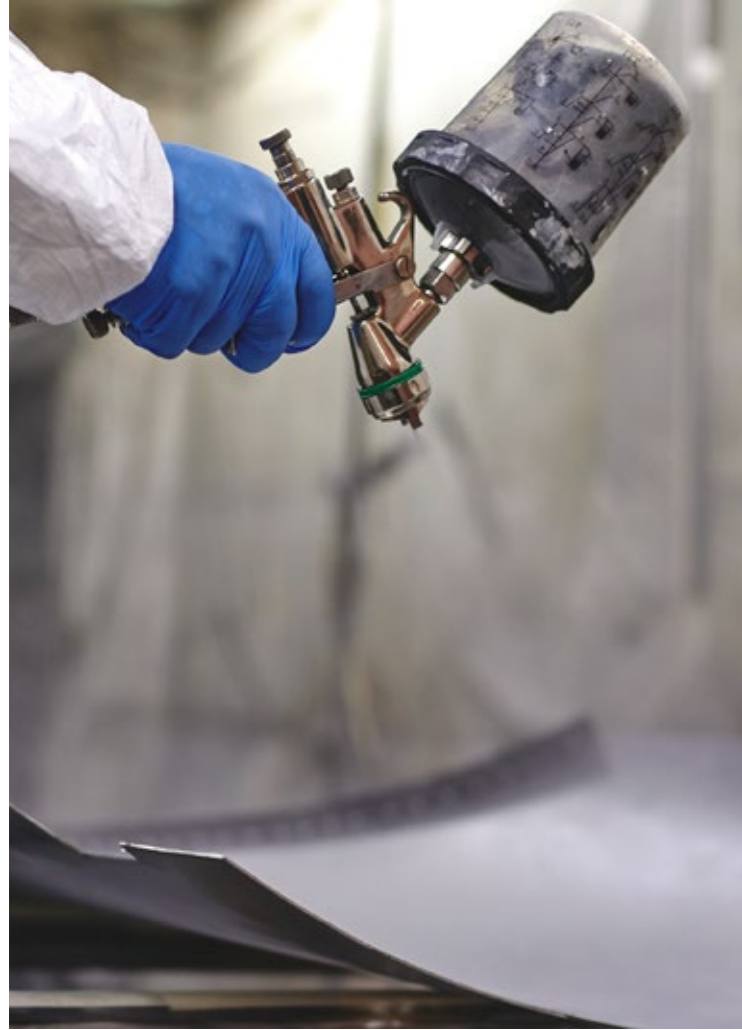




Material finishing and processing

Paints, polishes, protective treatments, and finishes are considered in relation to where the structure will ultimately live to elevate its aesthetic character and ensure durability, whether left visible or concealed beneath a cladding.

The materials chosen to complete the staircase are shaped through dedicated processes designed to integrate with the supporting structure. Advanced technologies, including 3D printing, broaden the design possibilities, allowing for unique detailing and custom-made components.

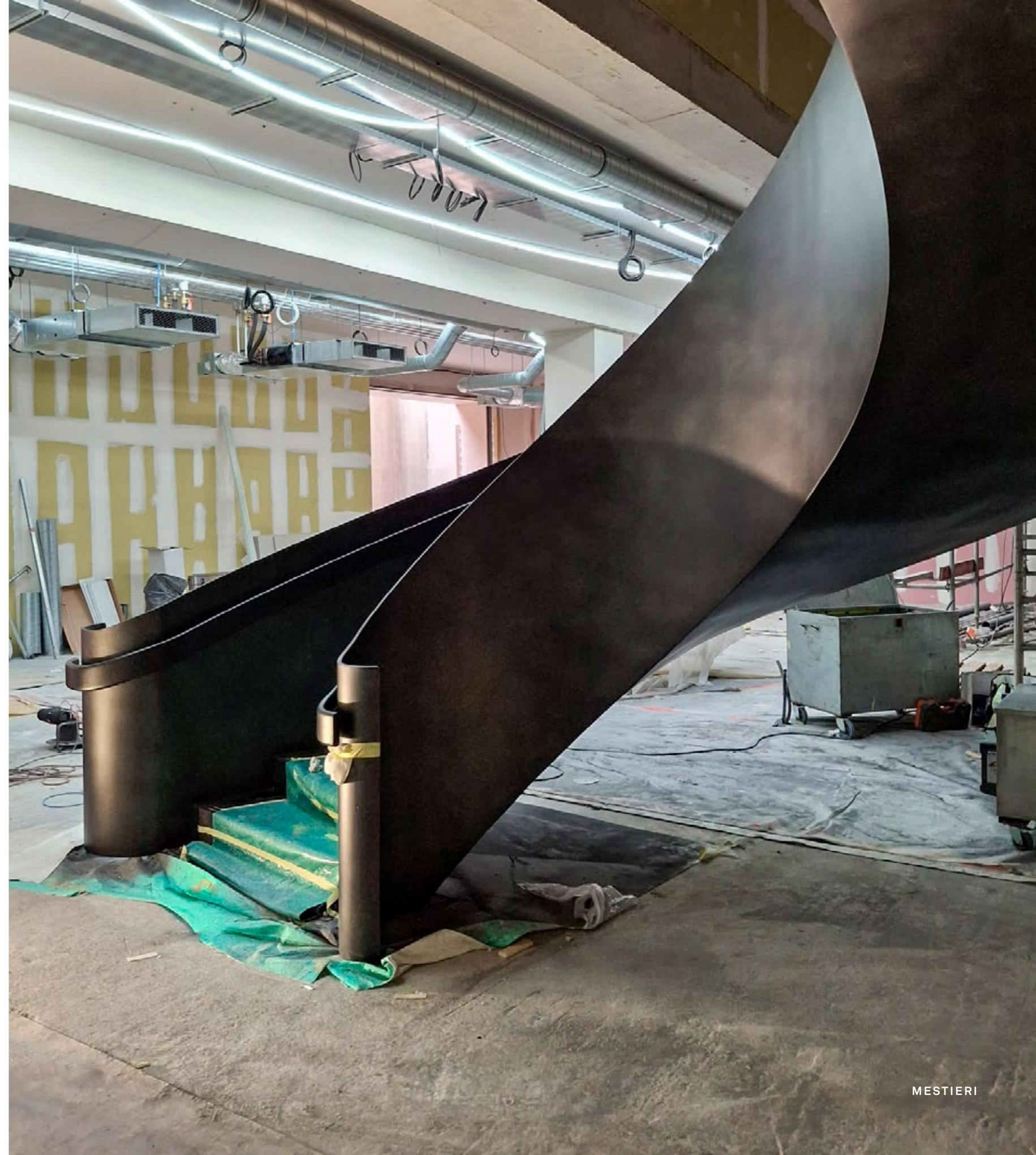


We guide the evolution of the structure through its *installation on site*, where elements and spaces connect

Certified Installation

During installation, design and material meet the reality of the site. Highly qualified, certified teams handle the work, operating confidently in complex, often fully finished environments. Their expertise ensures full compliance with regulations and harmony with the existing architecture.

Close coordination with the client and a steadfast commitment to safety guarantees a fully controlled installation aligned with the project's demands.





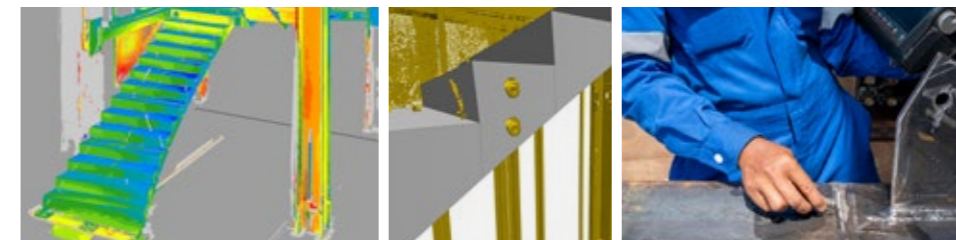
DESIGN + PRODUCTION + INSTALLATION + CERTIFICATION

Each step is measured,
evaluated, and refined:
Continuous monitoring
is our guarantee
of precision

Testing & Surveying

At each phase, the digital model is measured against the built reality to ensure complete alignment between design intent and final execution.

Surveys and precise measurements provide reliable data throughout the process, making it possible to detect deviations early and intervene with timely adjustments. This ongoing monitoring minimizes uncertainty, streamlines time frames and costs, and informs all technical decisions.



Solutions

Structural core

Always aiming higher. It is this ambition that drives Mestieri to create monumental and sculptural works.

Linear, helical, spiral, cantilevered, open-riser, suspended, self-supporting: these are reference configurations. Yet the structural core can take on any geometry. It can evolve, adapt to the context, and respond to the most diverse materials.

We embrace the most ambitious ideas and requests. We transform them into built works where design audacity, engineering excellence, and artisanal mastery meet.



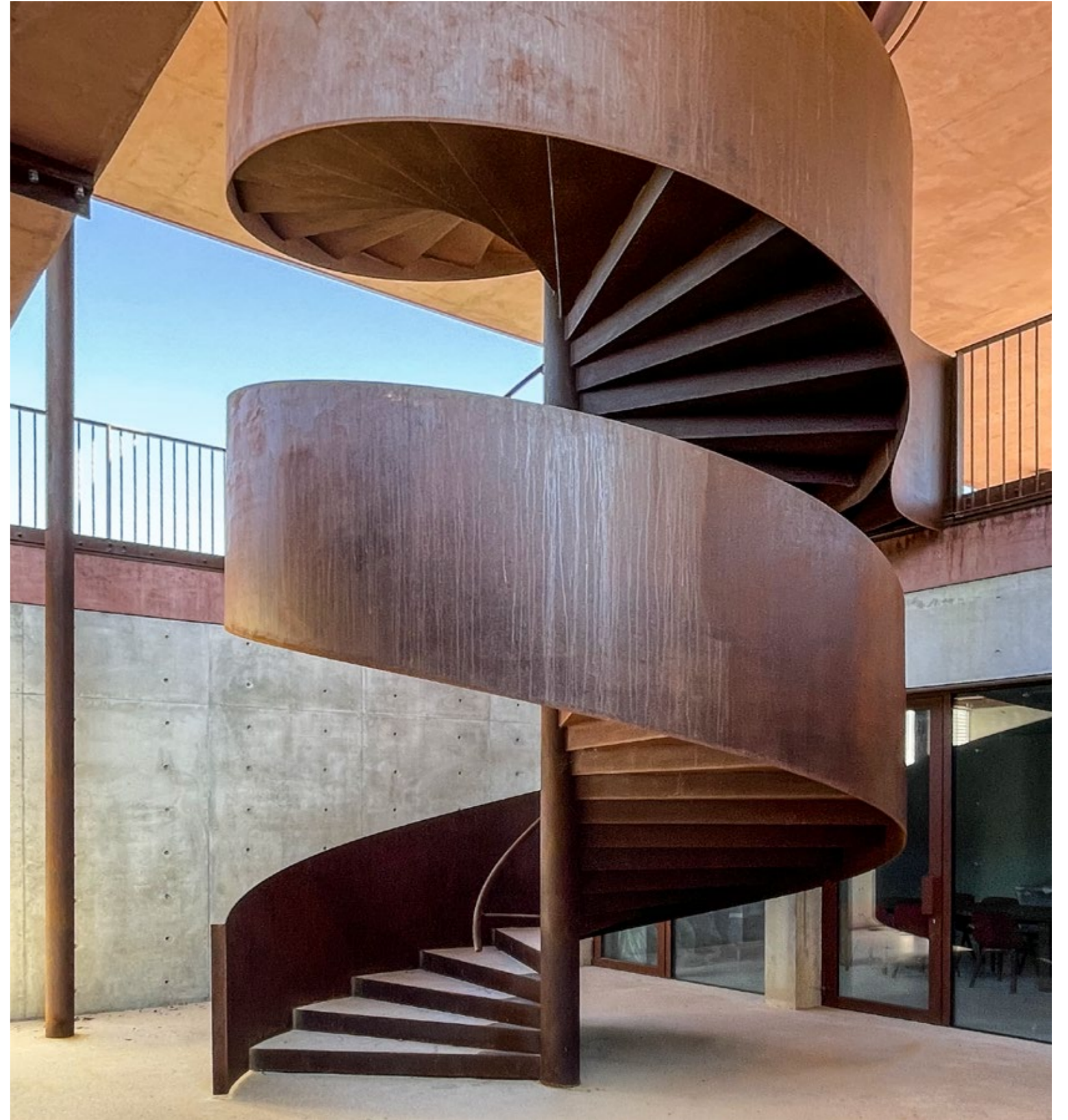
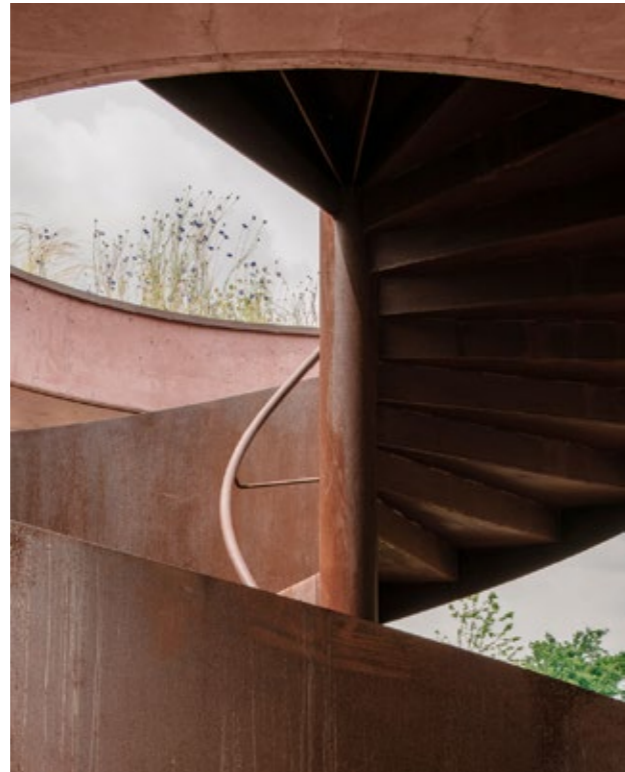


Self-supporting staircase in 15 mm mill scale steel, created for a three-floor reinforced concrete hall with no possibility of intermediate anchoring.

Welded on site with certified structural joints, it is formed from a single curved steel plate weighing 300 kg (660 lb), a process that calls for exceptional precision. Every component, including the steel handrail, reflect the project's technical complexity.

Monumental helical staircase
for Cantina Ceresé in Lecco.

The Cor-Ten steel structure,
with a diameter of 3.20 m (10.5 ft)
and a height of more than 12 m
(39 ft), sits within an architectural
setting awarded Best Building of 2024
at the Italian Architecture Prize
promoted by MAXXI and Triennale
Milano.



Special claddings

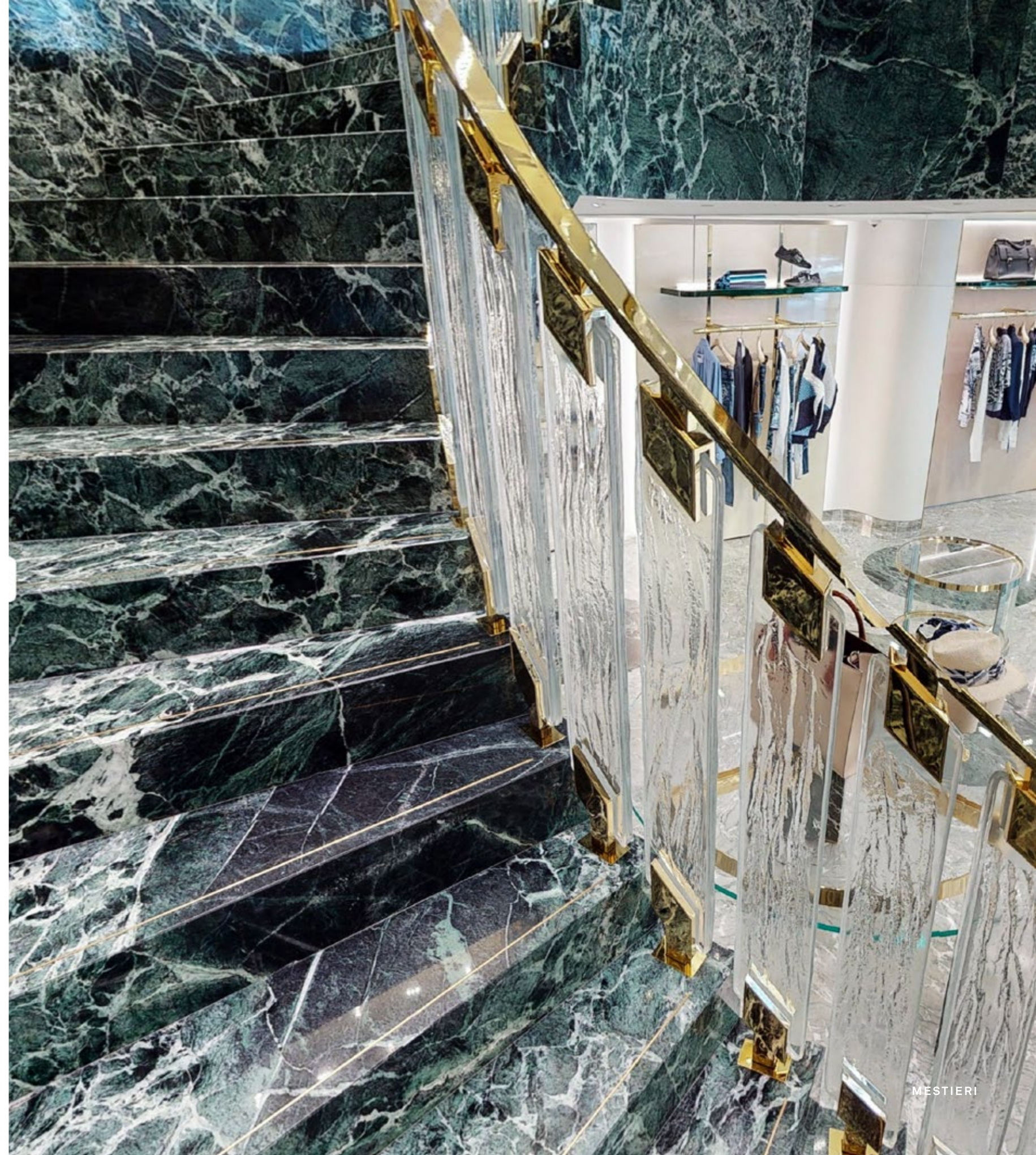
The metal core can be elevated with claddings that expand the expressive possibilities of the design. Depending on the aesthetic intent and the architectural context, these may include metals such as brass, refined marbles, natural or treated woods, clear or decorative glass, fine leathers, metallic textiles, and other unconventional finishes.

Metal claddings are generally fitted and checked in the workshop. Other materials are installed on site where they can be adjusted to the real conditions.

Working across materials in a coordinated way allows Mestieri to tailor each project in depth, without ever losing the clarity of its design intent.

→

For a luxury boutique on the Croisette in Cannes, we created a self-supporting staircase in solid pictorial green marble, expressed in two tones, light and dark.





Helical staircase in solid black marble, with treads inlaid in contrasting black and white marbles.

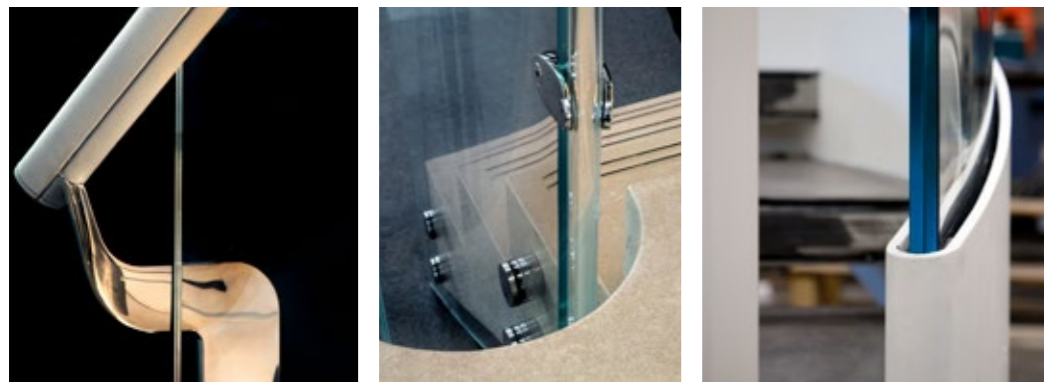


Risers and treads in solid wood clad in oak veneer with a touch finish. Walls in continuous fluted oak slats.

Signature accents

Handrails and balustrades are functional components that take on a distinctive presence, enhancing the identity of the whole project. On request, Mestieri also refines existing structures with finishes and ornamental work.

Materials are chosen to resonate with the space, from wrought iron for classic interiors to glass for modern ones, special combinations for truly bespoke results.



Staircase designed by architects Afra and Tobia Scarpa. Raw, natural materials sit alongside refined, high-precision elements, from the metal support beams to the copper handrail.



Curved balustrade in painted metal,
custom-fabricated during construction.

Laser-welded, high-finish painted balustrades, coordinated with Tadao Ando's project for Palazzo Grassi, Venice.

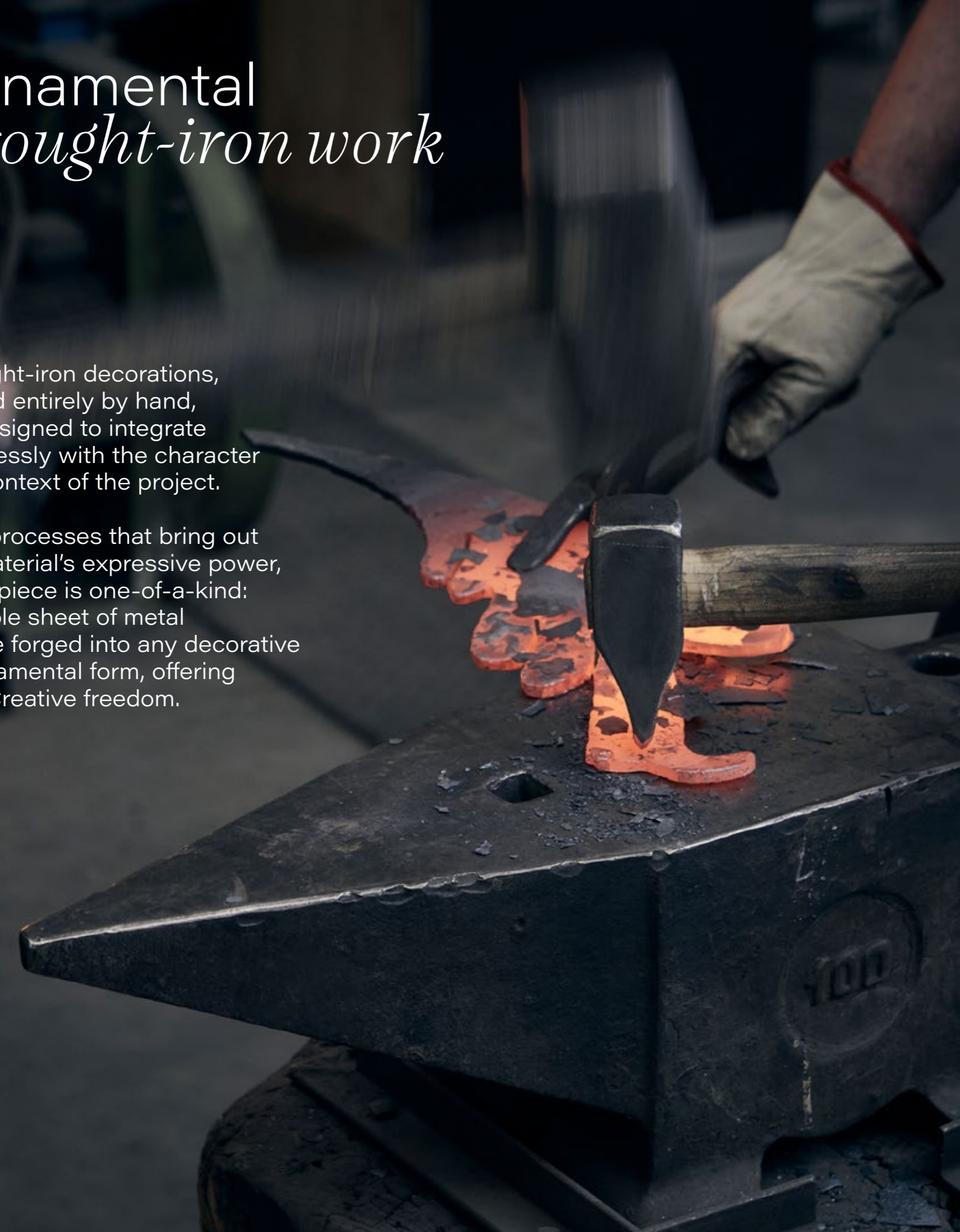
→
Cast-bronze handrail with a hammered texture and custom finish, crafted to the brand's specifications for the access stair to an exclusive boutique spa in New York. Surround composed of panels clad in woven metallic fabric.



Ornamental *wrought-iron work*

Wrought-iron decorations, crafted entirely by hand, are designed to integrate seamlessly with the character and context of the project.

With processes that bring out the material's expressive power, every piece is one-of-a-kind: a simple sheet of metal can be forged into any decorative or ornamental form, offering total Creative freedom.



Projects



Helical staircase custom-designed with the architects of a renowned maison for its London boutique.

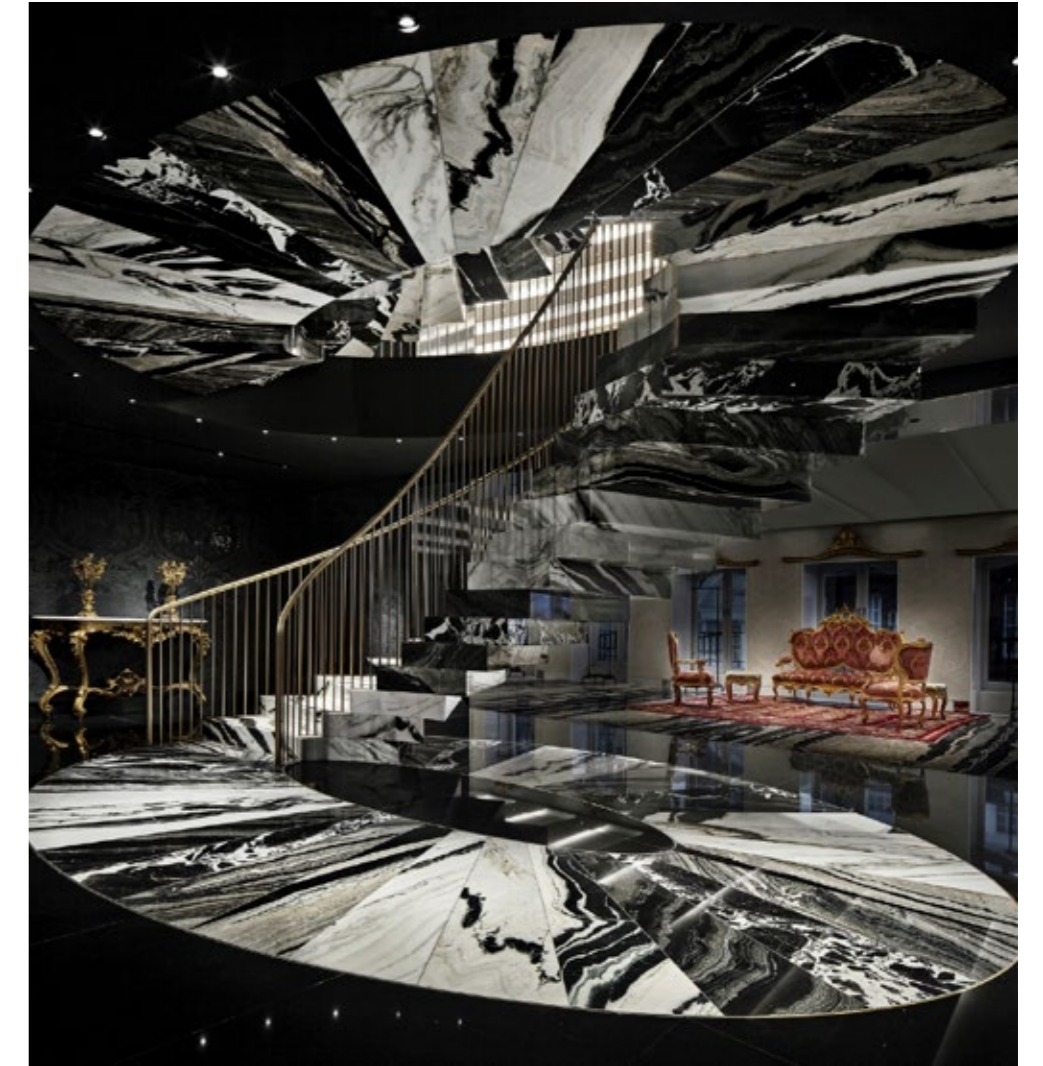
An intricate staircase of solid black marble. The treads are inlaid with a black-and-white marble pattern crafted by Budri using waterjet technology. A material that does not exist in nature.

The project received the Wallpaper Design Award for its design and complexity.



Inside the London boutique, the grand second staircase leading to the haute couture department features a metal structure clad in ten different types of black marble.

The curved metal balustrade was custom-fabricated during construction and painted on site with a specialty finish.





In London, the interior of a luxury boutique is elevated by a multi-material staircase with a steel load-bearing structure, Venetian terrazzo treads, glass balustrade, and wooden handrail.



For an exclusive boutique in Geneva, a monumental helical staircase takes shape around a fully integrated metal structure designed and built for flawless precision and fluid continuity.

The full terrazzo cladding on risers, treads, and soffit creates the impression of a single sculpted mass. This effect is the result of precise geometric modeling and exacting tolerances.



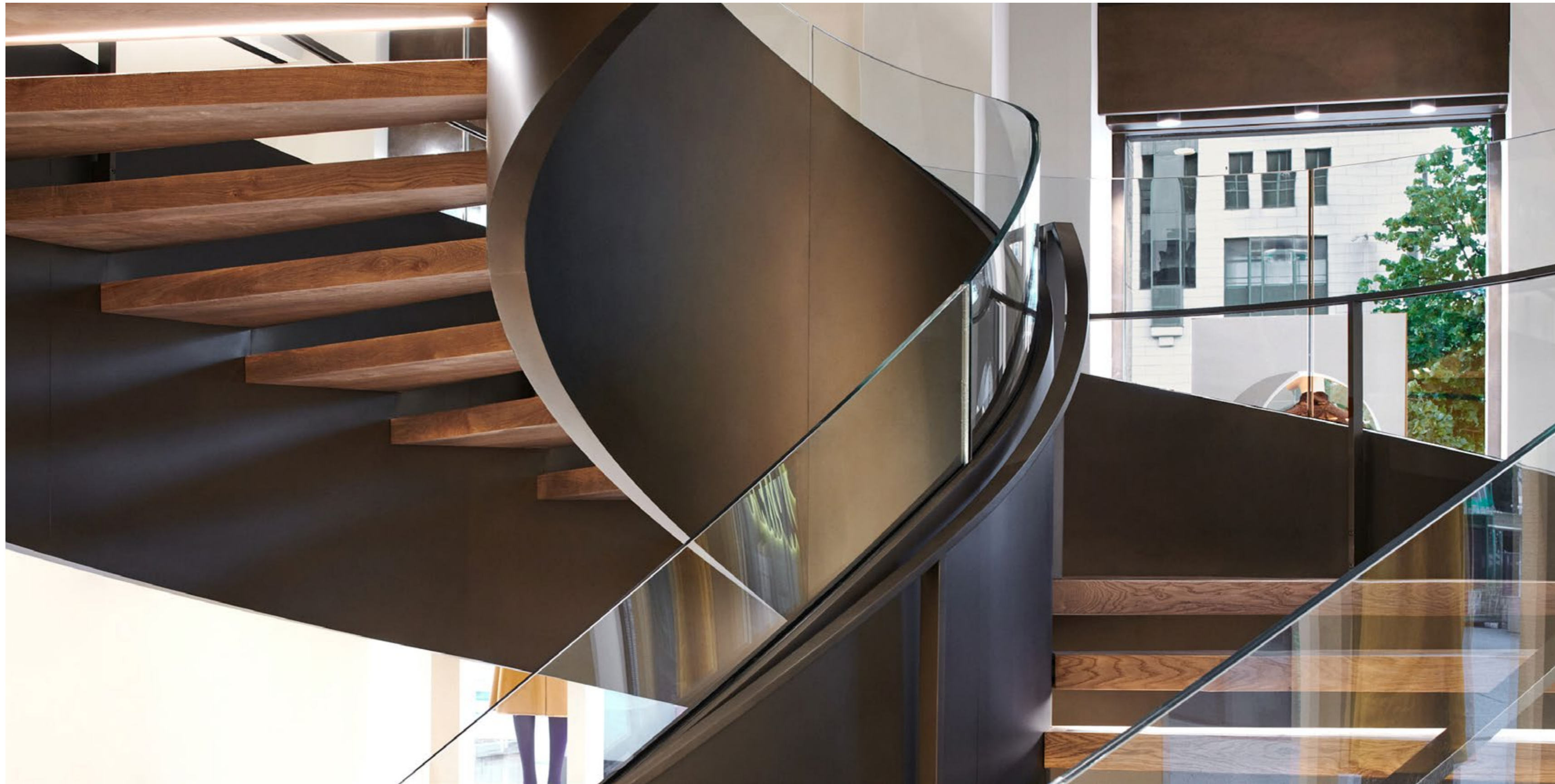


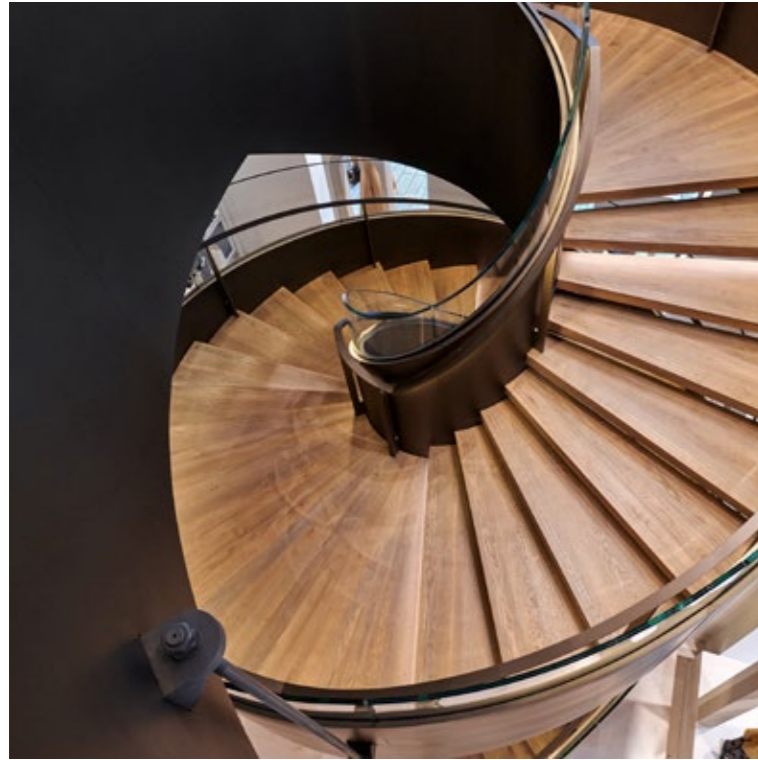
In New York, a monumental helical staircase was created to connect a fashion house's boutique to its spa.

Integrated into the existing structure, it is fully clad in Saint Croix stone, with a handrail recessed in the central stone core to ensure the seamless continuity of the material.

The project is completed by a surround in panels wrapped in woven metallic fabric and a cast-bronze handrail with a hammered, custom finish.



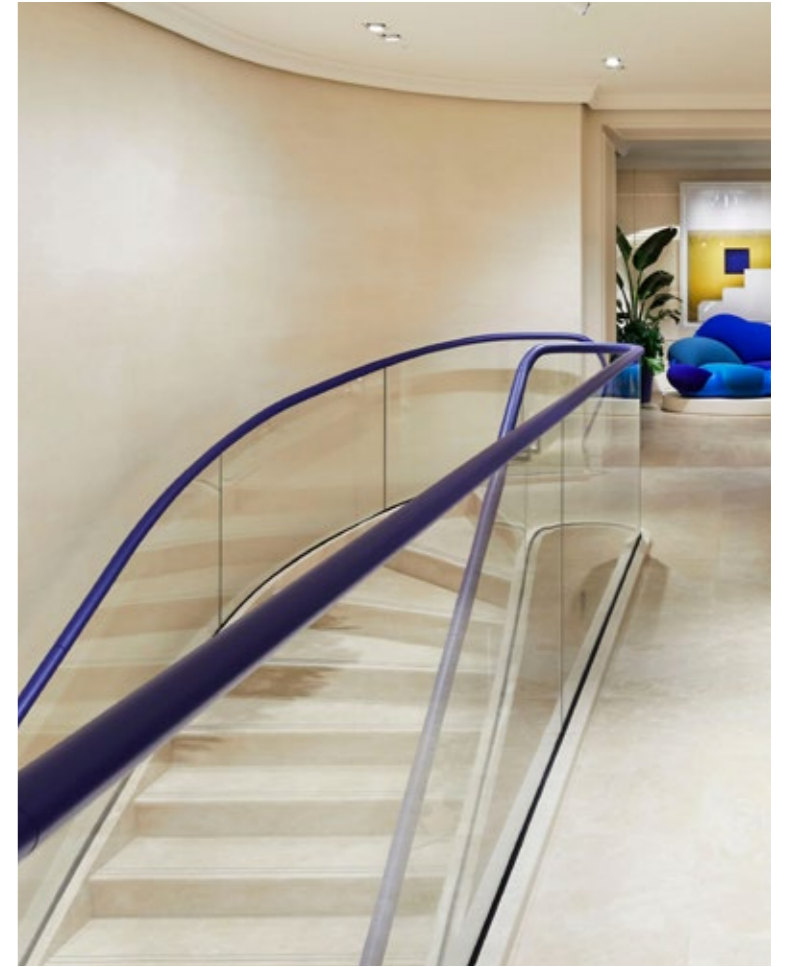




Inside a boutique in Düsseldorf, the self-supporting staircase is built in metalwork and clad in bronze-finished sheet metal.

A glass balustrade and metal handrail provide the final touch to the imposing structure.





In the Florence boutique of a renowned maison, the staircase features a metal structure, a glass balustrade that sweeps around the landing, and a blue-leather-covered wooden handrail.

Together, these elements create an eclectic language balanced between materials and detail.



For an exclusive boutique in Vienna, a monumental elliptical staircase rises through three levels, defined by its variable curvature.

The piece stands out for its seamless integration with the stone cladding, the elegant curved-glass balustrades, and the leather-finished handrails.





For its Paris boutique, a high-fashion house drew inspiration from Napoleonic aesthetics: the sweeping curved staircase in solid red marble echoes the floor finish and shapes the space's dramatic character.



For a private residence in Milan designed by architect Ezio Riva, a spiral staircase in Cor-Ten steel and iroko wood expresses a deep focus on materiality and craftsmanship.

The project was featured in the long-established Italian magazine INTERNI for its quality and artisanal mastery.

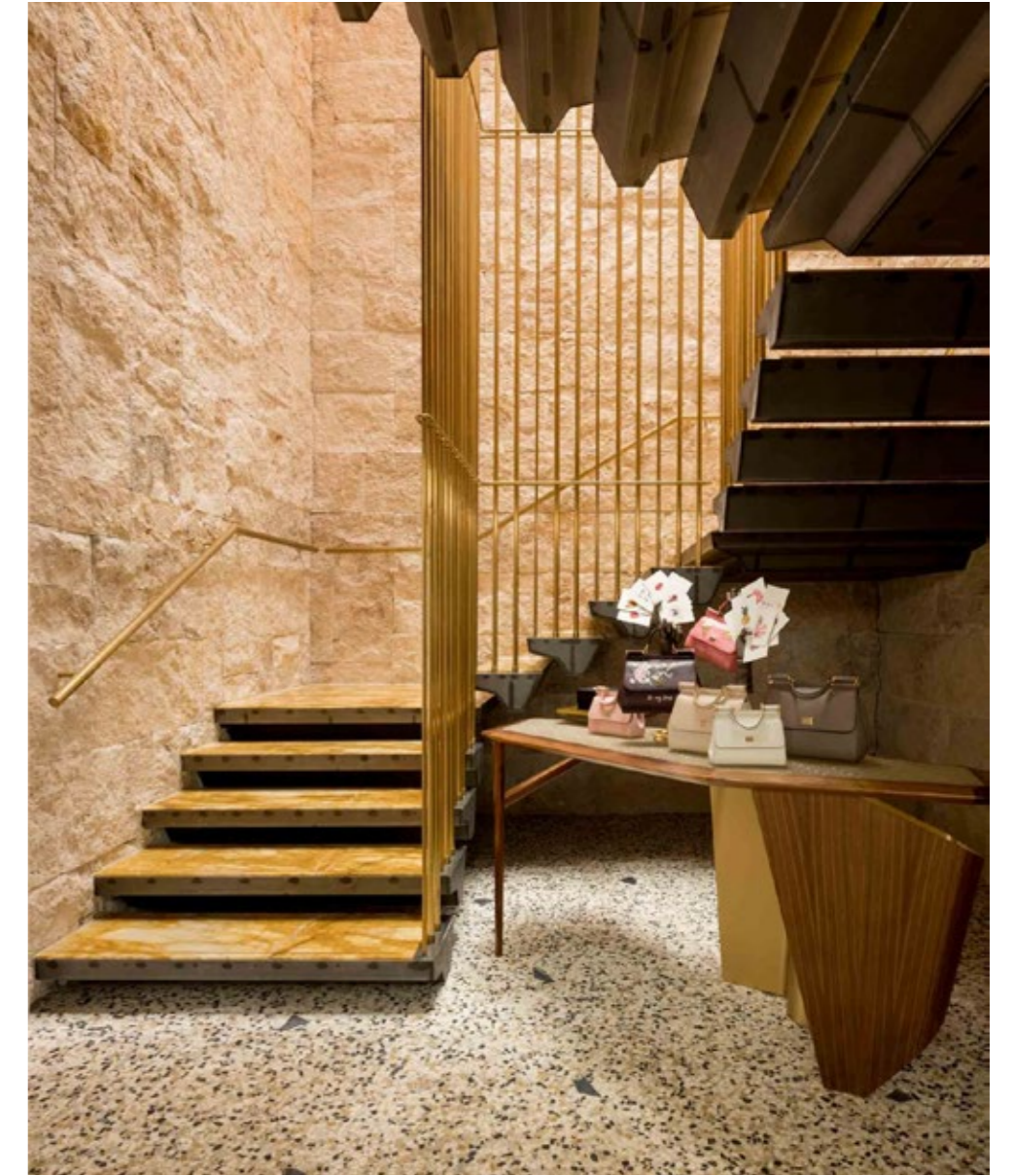




In Miami's famous Design District, a high-fashion house's boutique is defined by a custom metal staircase fabricated entirely in-house, with glass handrail and balustrade.

Set within a space fully clad in Travertino Classico Romano, the piece combines honed and split-face finishes with cantilevered elements that double as display podiums.





←
In Madrid, a helical metal staircase
was built for a luxury retail space,
complete with support panels
for the final finishes.

The balustrade is in glass, and the
handrail is wrapped in handcrafted
leather with exposed stitching.

↑
For a boutique in the heart of Rome,
a staircase with cantilevered steps
features an integrated balustrade
composed of burnished-brass rods.



In Milan, for an Italian high-fashion house, a staircase entirely in honed Basaltina stone brings steps, cladding, and recessed handrail into a single continuous material expression over a steel structure.





In Milan, for a high-fashion house, the existing staircase was completed with an ornamental railing crafted entirely in wrought iron.

←
In Milan, a staircase for a café store features brass and glass balustrades with coordinated brass cladding. Each step is unique in shape, geometry, and dimension.





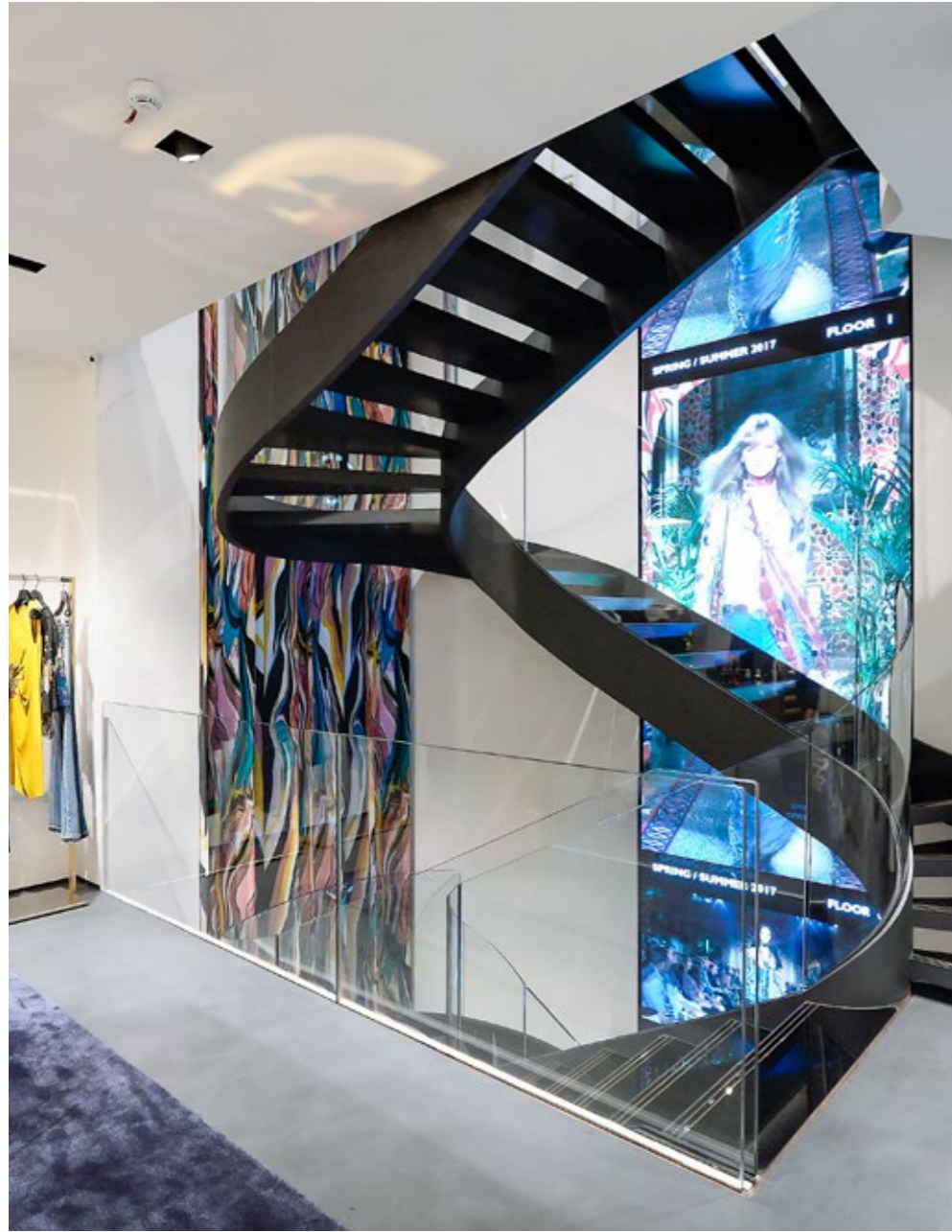
Inside a 17th-century Venetian villa restored by architect Tadao Ando and now home to a communication research center, metal and glass architectural elements were crafted throughout the building, including curtain-wall facades, staircases, and balustrades.

For a flagship clothing store in Milan, we conceived, engineered, tested, fabricated, painted, and installed a two-level self-supporting helical staircase in heavy-gauge metalwork complete with a glass balustrade.

→
For the brand's exhibition space in Rome, the helical staircase is built around a central load-bearing column.

Located inside the Galleria Alberto Sordi, a prestigious commercial and institutional landmark, the installation required special permits due to the historic context.



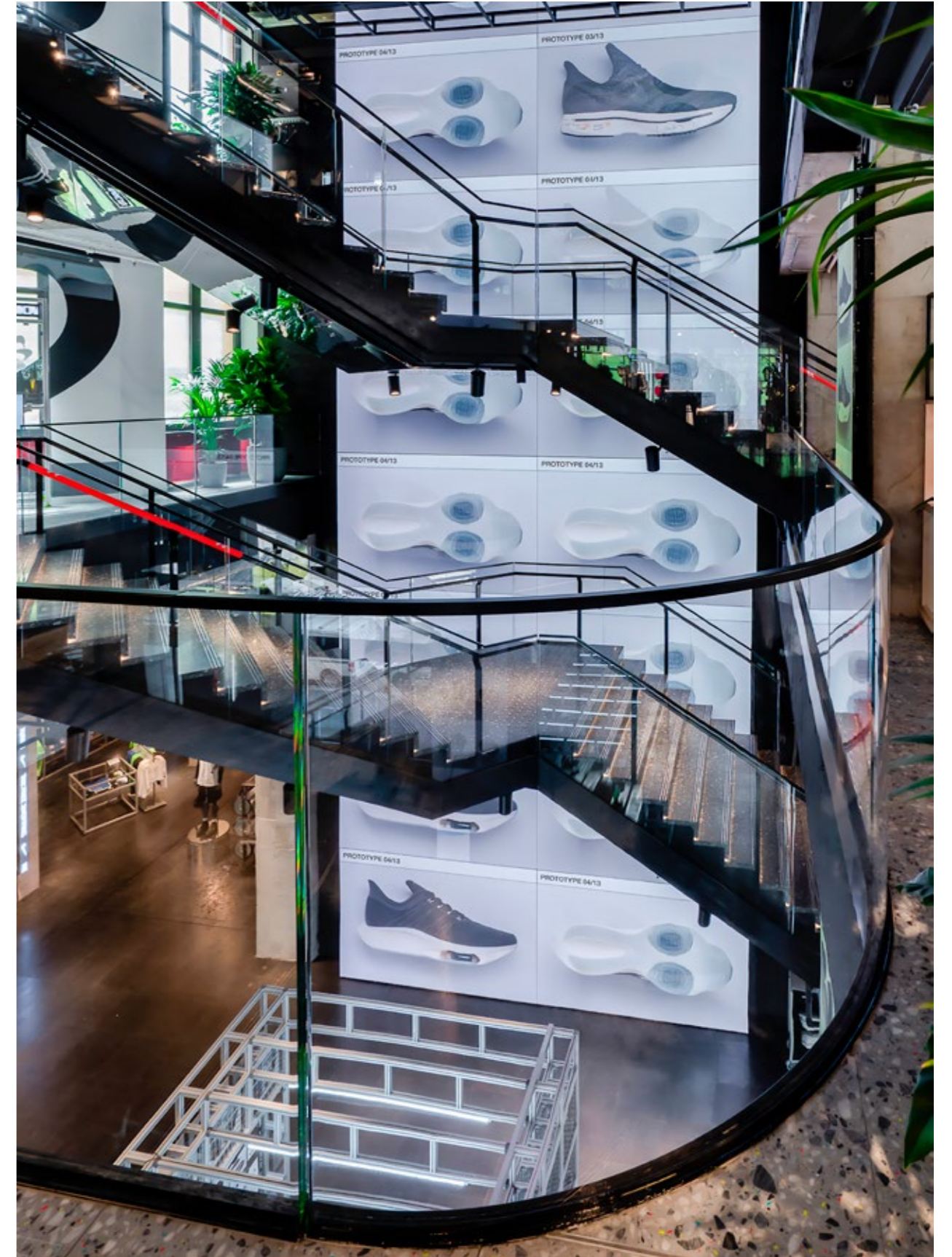


A self-supporting steel staircase for a Milan fashion boutique. The finish is a bespoke bronze coating, developed specifically for the project to evoke burnished brass.

The sheet-metal treads are clad in mosaic, while a curved glass balustrade follows the vertical rise of the staircase across four levels.



For a sports brand's megastore in Paris, a 39-foot-high cantilevered staircase was delivered as a complete package, connecting three levels of the space. The scope included the staircase structure, handrails, glass elements, mezzanines, and structural trusses.



Crafted for

Abercrombie & Fitch
Acne Studios
Alexander McQueen
AMA Venezia
Armani
Banco Santo Stefano
Benetton
Berluti
Biennale Venezia
Bottega Veneta
Buccellati
Bulgari
Burberry
Cantina Ceresè
Carron
Cartier
Cavalli
Céline
Chanel
Coin
Cova
Diesel
Dior
Dolce&Gabbana
Fabrica
Fendi
Ferrari
Geox
Gucci
Hermès
Hotel Nolinski
Hotel Monaco & Grand Canal
Hotel Principe di Savoia
Hotel Relais Monaco
Hotel Rosa Grand

Iceberg
Illy
Jimmy Choo
La Samaritaine
Louis Vuitton
Luxottica
Maison Margiela
Mandarina Duck
Marni
Max&Co.
Max Mara
Mercato Centrale
Moët Hennessy
Moncler
Montblanc
Nike
Off-White
Palazzo Grassi
Primark
Punta della Dogana
Qatar Airlines
Ray-Ban
Rolex
Saint Laurent
Starbucks
Stella McCartney
Tiffany & Co.
The Westin Europa & Regina
Tory Burch
Uniqlo
Villa Aegina
Villa Spineda Gasparini Loredan
Villa Duse

Venice, London, New York

EUROPE

Mestieri SpA

Via A. Boito 25
31048 San Biagio di Callalta
TV Italy
T (+39) 0438 4717
info@mestierigruppo.com



Mestieri UK Ltd

19 The Circle
Queen Elizabeth Street
London SE1 2JE
info@mestieriuk.com

USA

Mestieri USA Inc.

New York
info@mestieriusa.com

(BUDRI® +  + lamparredo + SKILLMAX + ) MESTIERI

MESTIERIGRUPPO.COM